

Everest Educational Society's  
**Mohd. Ali Johar Women's College of Education**

(B.Ed Course)

NCTE Code APW 01813/123262

Jatwada Road, Ohar, Chh. Sambhajinagar (Aurangabad).(M.S) 431008

**AFFILIATED TO S.N.D.T. WOMEN'S UNIVERSITY, MUMBAI**

[190.majweduction@gmail.com](mailto:190.majweduction@gmail.com)

**President**

**Dr. Abdul Gaffar Quadri**

M.B.B.S.,D.N.B.,M.D.(Ped.)

**Principal**

**Dr. Pandav B.K.**

M.A.(Soc.),M.A.(His),DSM,M.Ed.,M.P.Ed.Ph.D.(Edu.)

Mob. 9420763821

Ref: EES/MAJW/B.Ed./

Date: 26/11/2025

## **Infrastructure Facilities**

Everest Educational Society is committed to providing state-of-the-art physical facilities to support the educational and extracurricular needs of its students and staff. This policy outlines the provisions, maintenance, and usage of physical facilities across its institutions:

**Mohd. Ali Johar Women's College of Education, Chhatrapati Sambhajinagar,**

### **Objectives:**

- To ensure that all physical facilities meet the educational and extracurricular needs of students and staff.
- To maintain facilities in a safe, clean, and accessible manner.
- To provide an environment conducive to learning, teaching, and overall development.

### **Facilities Overview:**

The college under Everest Educational Society is equipped with the following facilities:

Multipurpose Hall: 1

Main Lecture Halls: 2

Psychology Room: 1

Science Room: 1

N Room: 1 (presumed specific to the institution's needs)

Physical Room: 1

Staff Rooms: 2

Girls' Common Room: 1

Store Room: 2

Office: 1

Principal's Cabin: 1

Examination Room: 1

Classrooms: 15

Water Connection: 1

Water Well: 1

Parking facilities for Male and Female Staff and Students

Adequate Sports Ground

Usage and Access

**Multipurpose Hall:**

- Used for assemblies, seminars, workshops, and cultural events.
- Booking must be done in advance through the administrative office.
- Lecture Halls, Psychology Room, and Science Room:
- Designated for academic purposes only.
- Access restricted to students and faculty of relevant courses.

**Common Rooms:**

- Girls' Common Rooms are provided for relaxation and recreational activities.
- Equipped with seating arrangements, reading materials, and recreational games.

**Staff Rooms:**

- Dedicated space for faculty members to prepare lessons, conduct meetings, and interact with colleagues.
- Each staff room is equipped with necessary furniture, storage, and computing facilities.

**Store Room:**

- Used for storing educational materials, stationery, and other supplies.
- Access limited to authorized personnel only.

**Principal's Cabin and Office:**

- The Principal's Cabin is used for administrative meetings and confidential discussions.
- The office handles administrative tasks and student services.

**Examination Room:**

- Used for conducting examinations and assessments.
- Equipped with necessary seating and invigilation facilities.

**Classrooms:**

- Regular academic sessions and lectures are conducted here.
- Equipped with necessary teaching aids, seating, and ventilation.

**Water Facilities:**

- A water connection and a well ensure a reliable supply of purified water for drinking and sanitation purposes.
- Regular maintenance and quality checks are performed to ensure safety and hygiene.

**Parking:**

- Separate parking areas are designated for male and female staff and students.
- Adequate space to accommodate the vehicles of all stakeholders.

**Sports Ground:**

- Provides facilities for various sports and physical activities.
- Maintained regularly to ensure safety and usability.

**Maintenance and Safety:**

- Regular Inspections: Facilities are inspected regularly to ensure they are in good condition.
- Cleaning Schedule: A strict cleaning schedule is maintained to ensure all areas are clean and hygienic.
- Safety Measures: Safety protocols are in place, including fire safety equipment, emergency exits, and first aid kits.
- Feedback Mechanism: A system is in place for students and staff to report maintenance issues or suggest improvements.

**Add Geo Tag Photos:**

Mrs. Dr B.K. Pandav  
MA, MEd & Social W.P.Ed. B.Ed. D.Ed. Ph.D. (BHU)  
Principal  
Mond. All Jhar B.Ed. College A'bad



GPS Map  
Camera Lite

W8qc+32g, Chhatrapati Sambhajinagar, Maharashtra 431101, India

Latitude  
19.93764364°

Local 11:53:10 AM  
GMT 06:23:10 AM

Longitude  
75.32012114°

Altitude 619 m  
Wednesday, 16.07.2025



W8qc+32g, Chhatrapati Sambhajinagar, Maharashtra 431101, India

Latitude  
19.93775108°

Local 11:53:51 AM  
GMT 06:23:51 AM

Longitude  
75.319894°

Altitude 618 m  
Wednesday, 16.07.2025



GPS Map  
Camera Lite



**GPS Map**  
Camera Lite

W8qc+32g, Chhatrapati Sambhajnagar, Maharashtra 431101, India

Latitude  
19.93775429°

Longitude  
75.31989511°

Local 11:53:56 AM  
GMT 06:23:56 AM

Altitude 618 m  
Wednesday, 16.07.2025





**GPS Map**  
**Camera Lite**

W8qc+32g, Chhatrapati Sambhajinagar, Maharashtra 431101, India

Latitude  
19.93778051°

Local 11:54:22 AM  
GMT 06:24:22 AM

Longitude  
75.31993464°

Altitude 618 m  
Wednesday, 16.07.2025



**GPS Map**  
**Camera Lite**

W8qc+32g, Chhatrapati Sambhajinagar, Maharashtra 431101, India

Latitude  
19.9377446°

Longitude  
75.31989573°

Local 11:53:59 AM  
GMT 06:23:59 AM

Altitude 618 m  
Wednesday, 16.07.2025





**GPS Map**  
**Camera Lite**

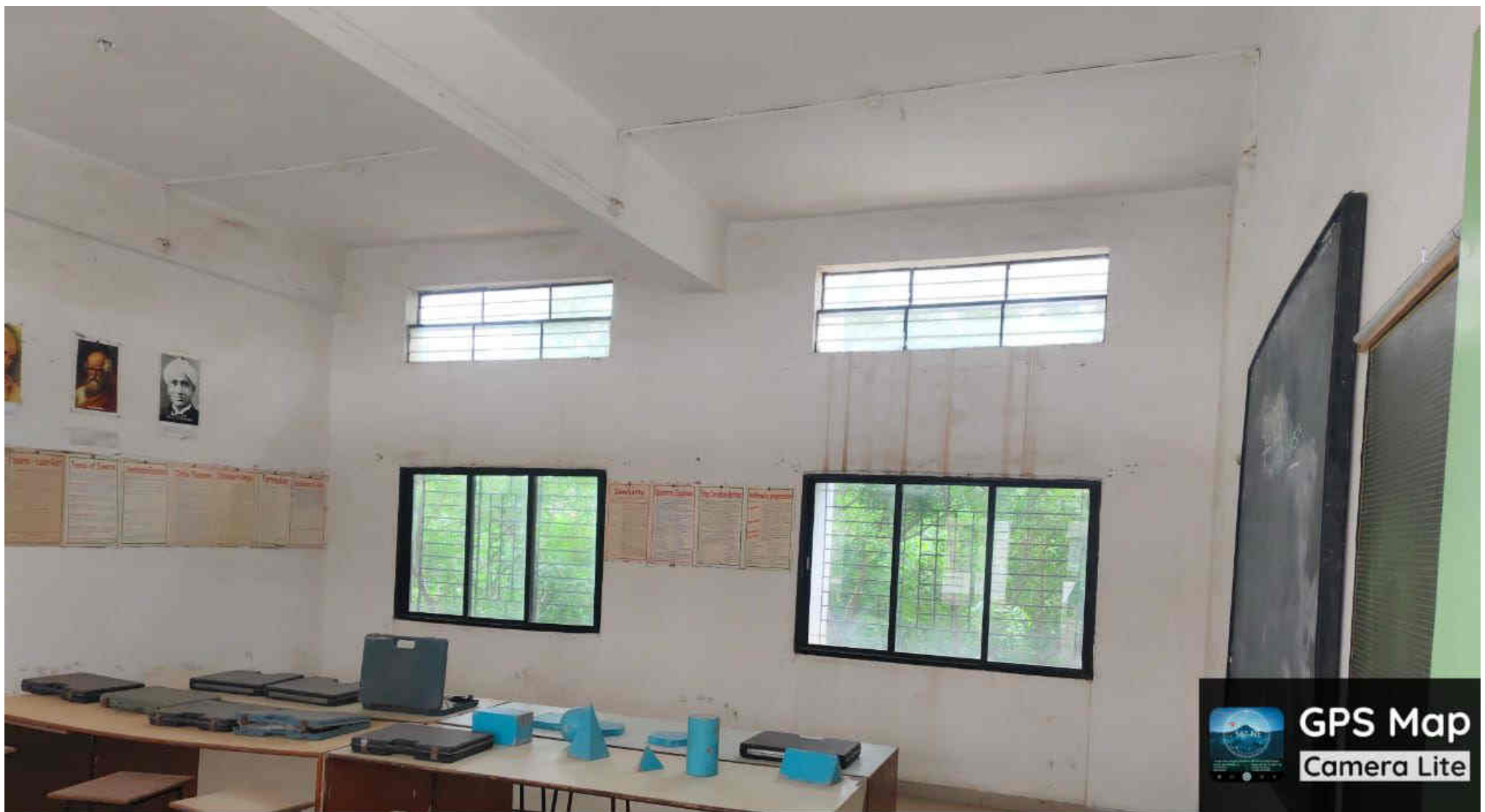
W8qc+32g, Chhatrapati Sambhajinagar, Maharashtra 431101, India

Latitude  
19.93779052°

Longitude  
75.31991682°

Local 11:54:13 AM  
GMT 06:24:13 AM

Altitude 618 m  
Wednesday, 16.07.2025



GPS Map  
Camera Lite

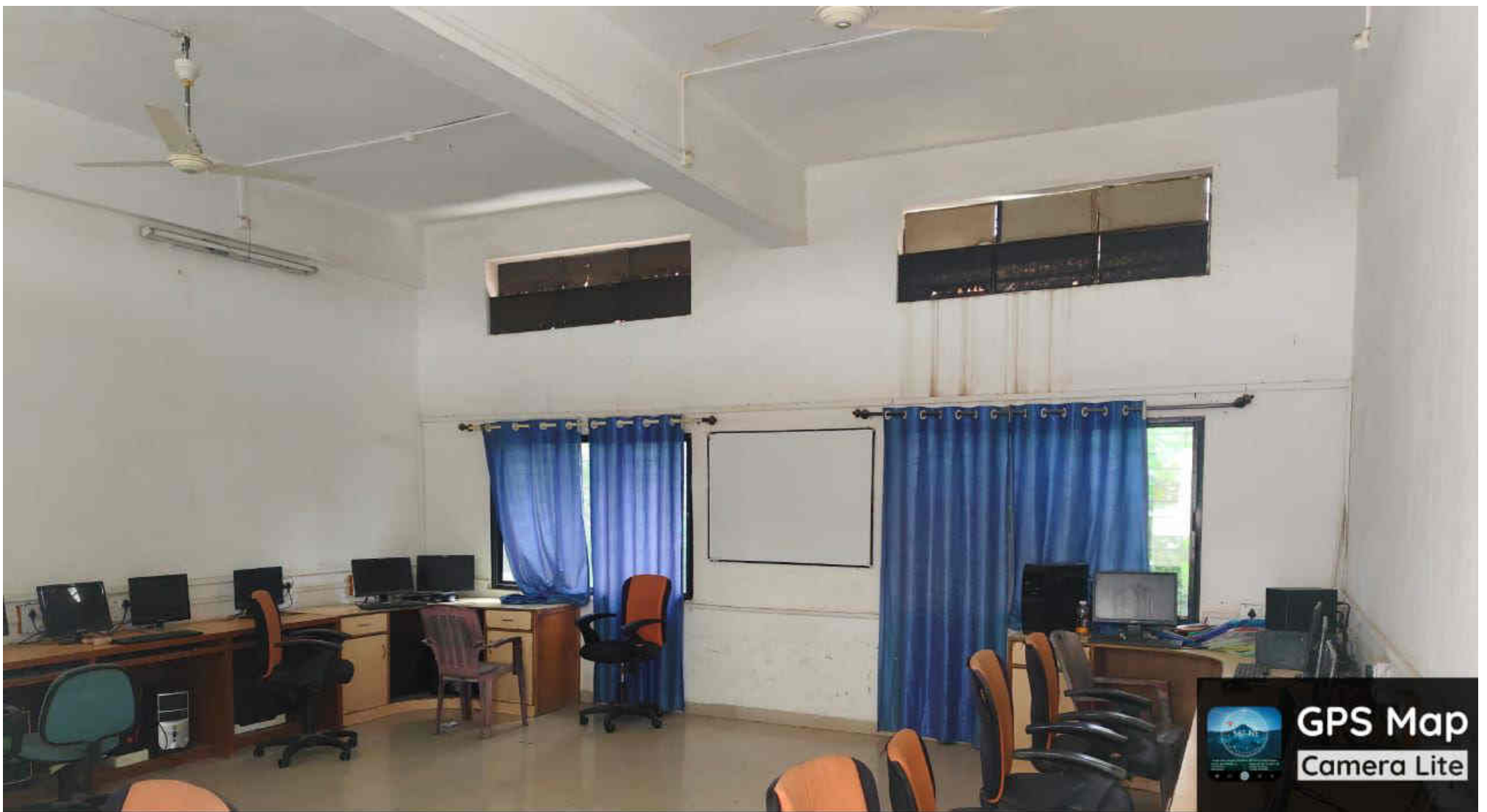
W8qc+32g, Chhatrapati Sambhajnagar, Maharashtra 431101, India

Latitude  
19.937709°

Longitude  
75.3201338°

Local 11:42:16 AM  
GMT 06:12:16 AM

Altitude 619 m  
Wednesday, 16.07.2025



W8qc+32g, Chhatrapati Sambhajinagar, Maharashtra 431101, India

Latitude  
19.93766763°

Local 11:41:52 AM  
GMT 06:11:52 AM

Longitude  
75.32007579°

Altitude 619 m  
Wednesday, 16.07.2025





**GPS Map**  
**Camera Lite**

W8qc+32g, Chhatrapati Sambhajinagar, Maharashtra 431101, India

Latitude  
19.93773265°

Local 11:46:28 AM  
GMT 06:16:28 AM

Longitude  
75.31999945°

Altitude 619 m  
Wednesday, 16.07.2025



## Seminar Hall



**GPS Map**  
Camera Lite

W8qc+32g, Chhatrapati Sambhajinagar, Maharashtra 431101, India

Latitude  
19.9376898°

Longitude  
75.32008505°

Local 11:45:22 AM  
GMT 06:15:22 AM

Altitude 619 m  
Wednesday, 16.07.2025





**GPS Map**  
**Camera Lite**

W8qc+32g, Chhatrapati Sambhajinagar, Maharashtra 431101, India

Latitude  
19.93767603°

Local 11:51:59 AM  
GMT 06:21:59 AM

Longitude  
75.3201824°

Altitude 619 m  
Wednesday, 16.07.2025



**GPS Map**  
Camera Lite

W8qc+32g, Chhatrapati Sambhajinagar, Maharashtra 431101, India

Latitude  
19.9378003°

Local 11:49:48 AM  
GMT 06:19:48 AM

Longitude  
75.32013203°

Altitude 619 m  
Wednesday, 16.07.2025





W8qc+32g, Chhatrapati Sambhajinagar, Maharashtra 431101, India

Latitude  
19.93779614°

Longitude  
75.3201696°

Local 11:49:56 AM  
GMT 06:19:56 AM

Altitude 619 m  
Wednesday, 16.07.2025

B.ED STAFF ROOM



GPS Map  
Camera Lite

W8qc+32g, Chhatrapati Sambhajinagar, Maharashtra 431101, India

Latitude  
19.93767765°

Longitude  
75.32018147°

Local 11:51:57 AM  
GMT 06:21:57 AM

Altitude 619 m  
Wednesday, 16.07.2025





**GPS Map**  
**Camera Lite**

W8qc+32g, Chhatrapati Sambhajinagar, Maharashtra 431101, India

Latitude  
19.93778558°

Longitude  
75.32011496°

Local 11:49:44 AM  
GMT 06:19:44 AM

Altitude 619 m  
Wednesday, 16.07.2025





**GPS Map**  
**Camera Lite**

W8qc+32g, Chhatrapati Sambhajnagar, Maharashtra 431101, India

Latitude  
19.9377857°

Longitude  
75.32011464°

Local 11:49:42 AM  
GMT 06:19:42 AM

Altitude 619 m  
Wednesday, 16.07.2025



**GPS Map**  
Camera Lite

W8qc+32g, Chhatrapati Sambhajinagar, Maharashtra 431101, India

Latitude  
19.93774976°

Local 11:42:12 AM  
GMT 06:12:12 AM

Longitude  
75.32012093°

Altitude 619 m  
Wednesday, 16.07.2025



**GPS Map**  
**Camera Lite**

W8qc+32g, Chhatrapati Sambhajinagar, Maharashtra 431101, India

Latitude  
19.93766028°

Local 11:41:47 AM  
GMT 06:11:47 AM

Longitude  
75.32006745°

Altitude 619 m  
Wednesday, 16.07.2025





**GPS Map**  
**Camera Lite**

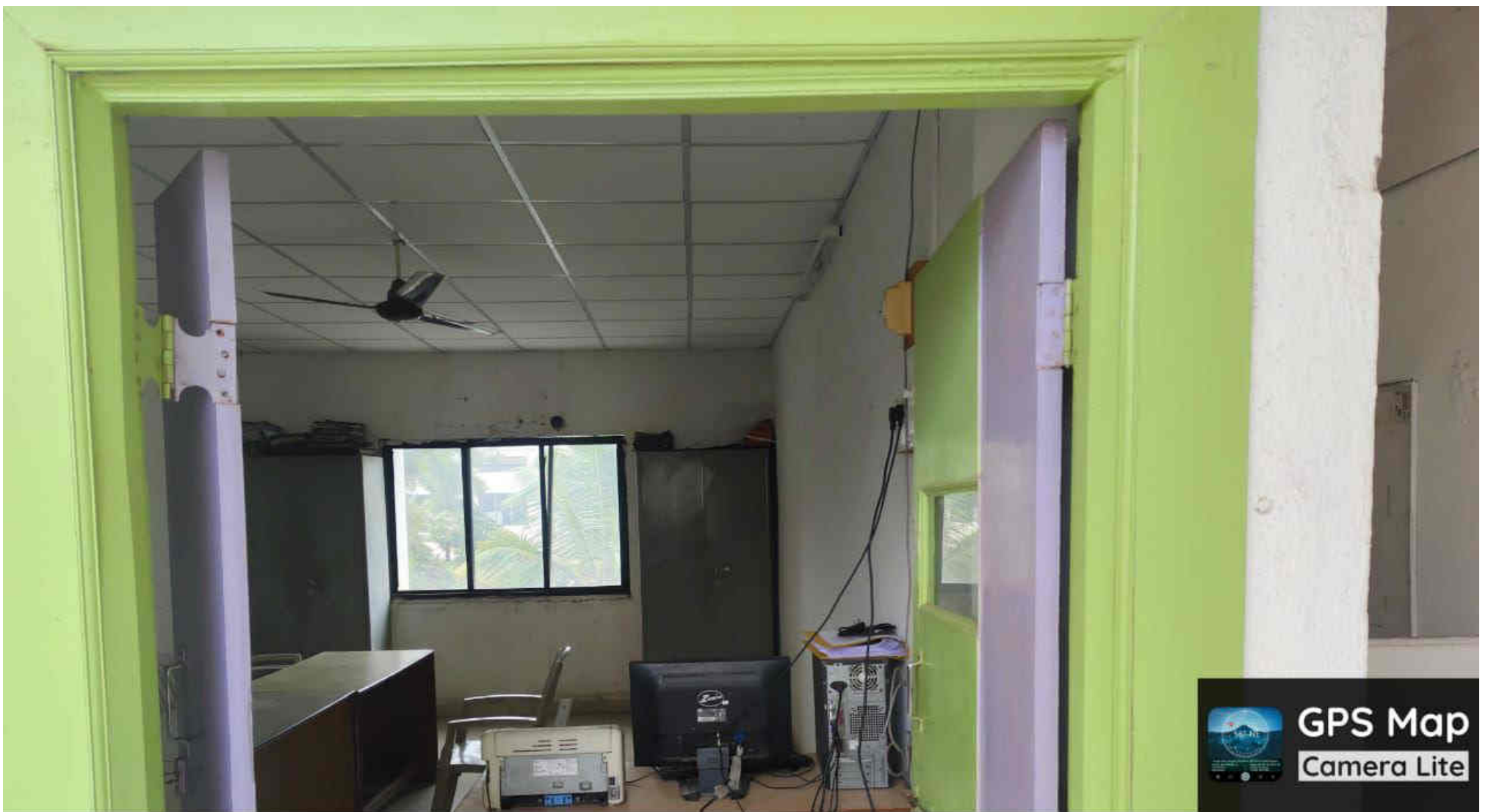
W8qc+32g, Chhatrapati Sambhajinagar, Maharashtra 431101, India

Latitude  
19.9376438°

Longitude  
75.32016424°

Local 11:52:42 AM  
GMT 06:22:42 AM

Altitude 619 m  
Wednesday, 16.07.2025



**GPS Map**  
**Camera Lite**

W8qc+32g, Chhatrapati Sambhajnagar, Maharashtra 431101, India

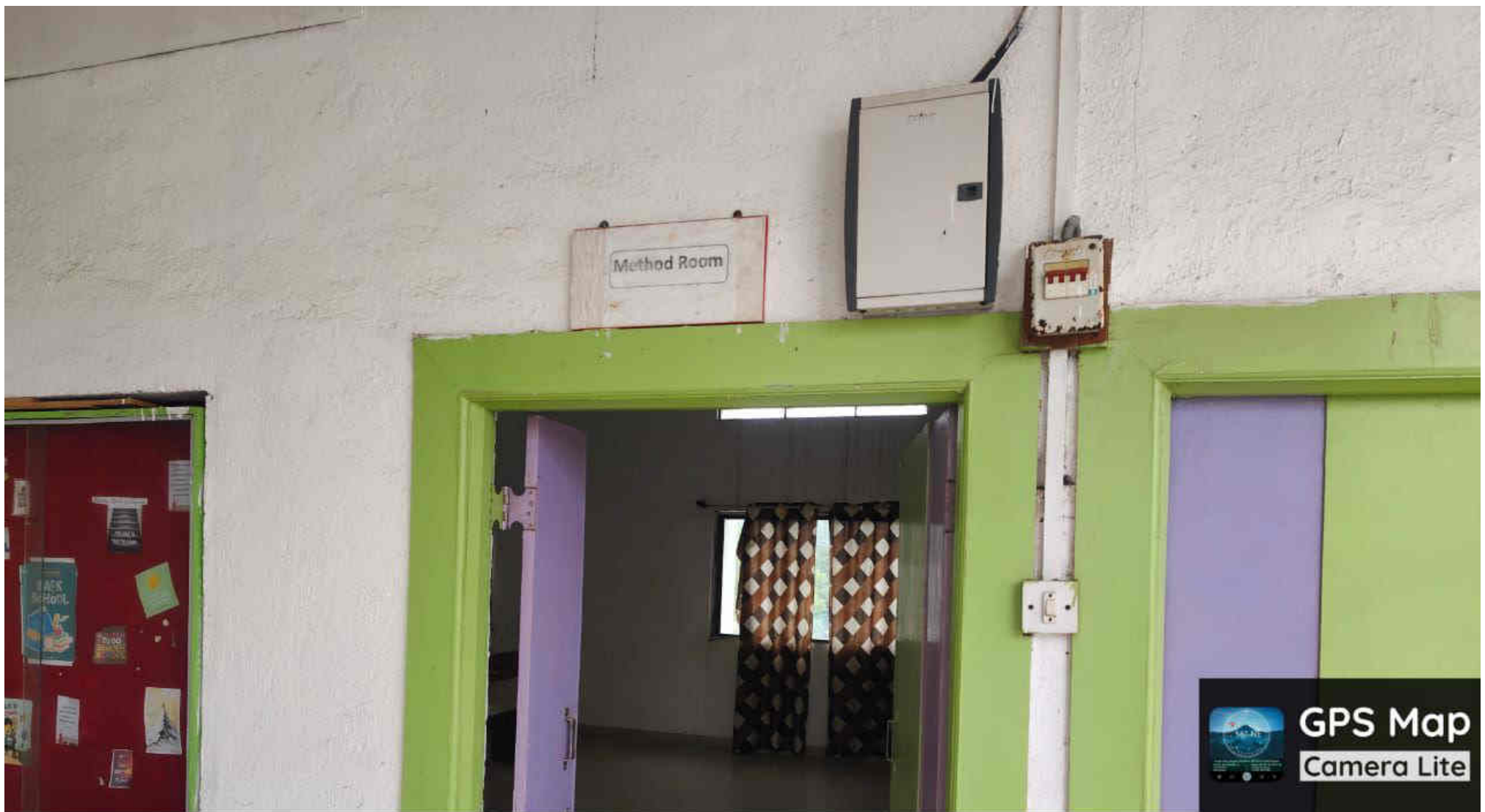
Latitude  
19.9375587°

Longitude  
75.3200444°

Local 11:52:45 AM  
GMT 06:22:45 AM

Altitude 619 m  
Wednesday, 16.07.2025





**GPS Map**  
**Camera Lite**

W8qc+32g, Chhatrapati Sambhajinagar, Maharashtra 431101, India

Latitude  
19.93760955°

Local 11:53:00 AM  
GMT 06:23:00 AM

Longitude  
75.32017677°

Altitude 619 m  
Wednesday, 16.07.2025